

# Inter Entity Trade

For Sage 300 ERP (Accpac)



Do you **manage** multiple entities which **trade** with each other?  
Are you **struggling** to keep everything in **balance**?  
Are **efficiency** and growth impeded by processing routine **transactions**?  
Are you **expanding** into new markets, needing visibility across operations while using your standard business **processes**?

## What is Inter Entity Trade?

Developed by Orchid Systems, Inter Entity Trade automates the flow of transactions in Sage 300 ERP (Accpac) when partner companies, branches, divisions etc buy and sell products or perform services between each other. Reciprocal documents are created according to business rules you set up: when you initiate a transaction in one company, Inter Entity Trade makes the corresponding entries in the other company. No need to duplicate it for the other company.

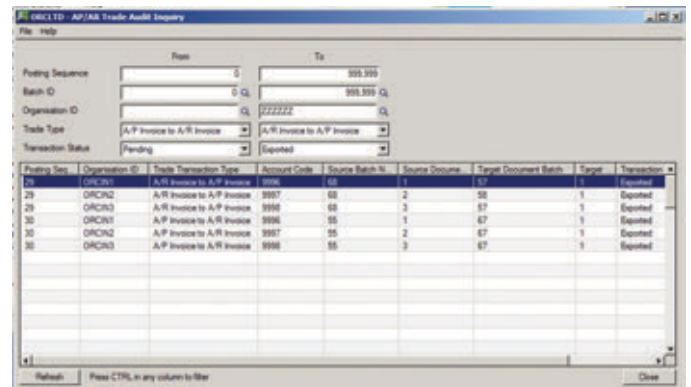
For example, when Company A (Source company) sells to Company B (Target company), Inter Entity Trade automates the generation of purchase order and goods receipt documents in Company B which correspond to the OE sales order and OE shipment documents in Company A, and it generates the AP Invoice after the AR Invoice is issued. This is also done with Purchase Orders initiating OE Orders, invoices and credits too, for example.

For Services, if Company B carries out services for Company A, either Company can raise the invoice and Inter Entity Trade issues the corresponding AR or AP invoice for the other party as appropriate. The result saves time, increases accuracy and efficiency. Read more in Key Features below.

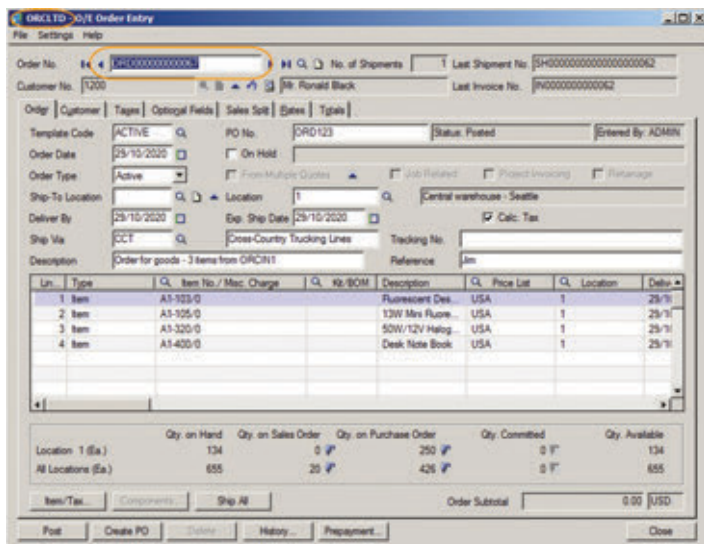
Globalization enables organizations to expand and operate across borders. This results in a proliferation of related companies trading with each other and the need to keep track of items and services, purchase and sales orders, shipments and receipts, invoices and taxes. Inter Entity Trade automates this and increases the accuracy of data, improves efficiency and provides better visibility across a group of companies.

## Benefits

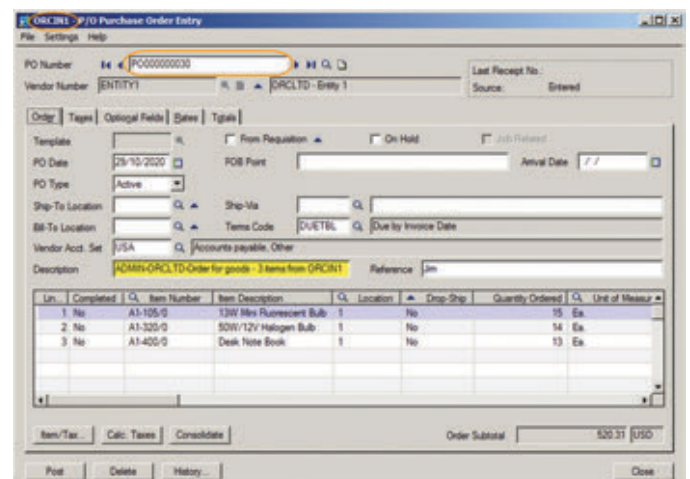
- Enhances productivity and efficiency.
- Automates and streamlines business processes.
- Improves visibility of operations across a group of companies.
- Large time savings from eliminating duplicating entries and checking them.
- Input transactions once and replicate across companies.
- Increased accuracy from automated processes.
- Simplifies collaboration in complex organisations.



(Source and Target transactions flagged)



(OE Order entered)



(Associated PO created)



# Inter Entity Trade

For Sage 300 ERP (Accpac)

www.orchidsystems.biz

Provide **visibility** across operations using standard **business** processes  
**Saves** doubling up on **data entry**  
Work **smarter** not **harder**

## Key Features

### System

- Map which companies will trade with each other.
- Map information to flow through from document to document.
- Comprehensive audit logging to ensure that all transactions are accounted for.
- Optionally allows bi-directional processing. For example if POs in Company 1 against Vendor 2 automatically created SOs in Company 2 against Customer 1, then you can either "Receive" the PO which would cause the SO to be shipped OR Ship the SO which will cause the PO to be received. In prior versions, this automation could only go "one-way".

### Trade AP to AR, or AR to AP

- Map AP Vendor in Source company to AR customer in Target company (or vice versa).
- Optionally specify a multiplier to mark up or mark down the Target document.
- Optionally include Sage 300 ERP Project and Job Costing fields to be transferred from Source document to Target document.
- Optionally map Source document GL Account to Target document GL Account.

#### Create transactions from:

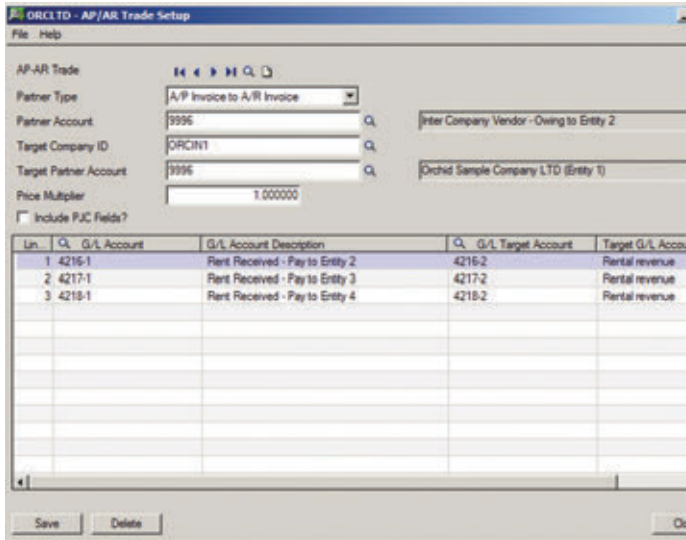
- AP Invoices to AR Invoices.
- AP Credit Notes to AR Credit Notes.
- AR Invoices to AP Invoices.
- AR Credit Notes to AP Credit Notes.

### Trade OE to PO, or PO to OE

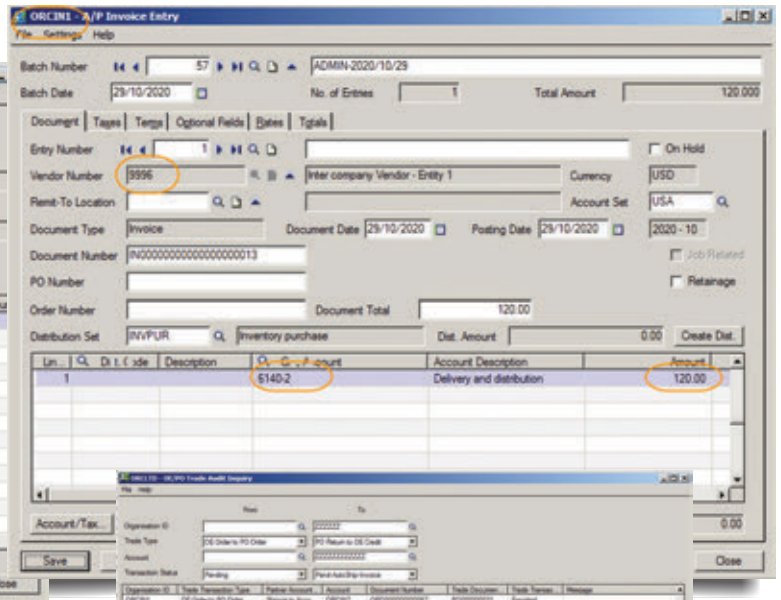
- Account to Account mapping. Map OE customer in Source company to PO vendor in Target company (or vice versa).
- "Ship Via" to Account Mapping. Map OE "Ship Via" in Source company to PO Vendor in Target company (or vice versa).
- Optionally include Sage 300 ERP Project and Job Costing fields to be transferred from the Source document to the target document.
- Optionally include Sage 300 ERP IC Serial and Lot Number fields to be transferred from the Source document to the Target document.
- Optionally override the category on the Target OE documents to easily identify intergroup transactions for consolidated reporting.
- Optionally override the location on the Target OE or PO documents to easily identify intergroup transactions for consolidated reporting.
- Optionally map IC items across companies if not identical.

#### Create documents from:

- OE Orders to PO Orders.
- OE Shipments to PO Receipts.
- OE Invoices to PO Invoices.
- OE Credit Notes to PO Returns.
- PO Orders to OE Orders.
- PO Receipts to OE Shipments.
- PO Invoices to OE Invoices.
- PO Returns to OE Credit Notes



(AP/AR setup between 2 companies)



(Posting errors shown in Audit Log)

## Minimum Requirements

Inter Entity Trade 2014 requires Sage 300 ERP (Accpac) 2014 System Manager, General Ledger, Accounts Receivable and Accounts Payable. Inter Entity Trade optionally works with Sage 300 ERP 2014 Order Entry, Inventory Control and Purchase Orders, and Orchid Inter Entity Transactions.

Further details from your Sage Software Solution Provider.

Copyright © 2014 Orchid Systems. All rights reserved.  
All trademarks are registered trademarks or trademarks of their respective companies.



Suite 2 / 273 Alfred Street, North Sydney, NSW, Australia, 2060  
+61-2-9925-0383 / Fx +61-2-9955-3926 / info@orchidsystems.biz

