

# IFS Smart Freight Link

For Sage 300 ERP (Accpac)



Integrate seamlessly with IFS Smart Freight<sup>®</sup>  
Automatically record actual freight cost and consignment note number in Sage 300 ERP

## What is IFS Smart Freight Link?

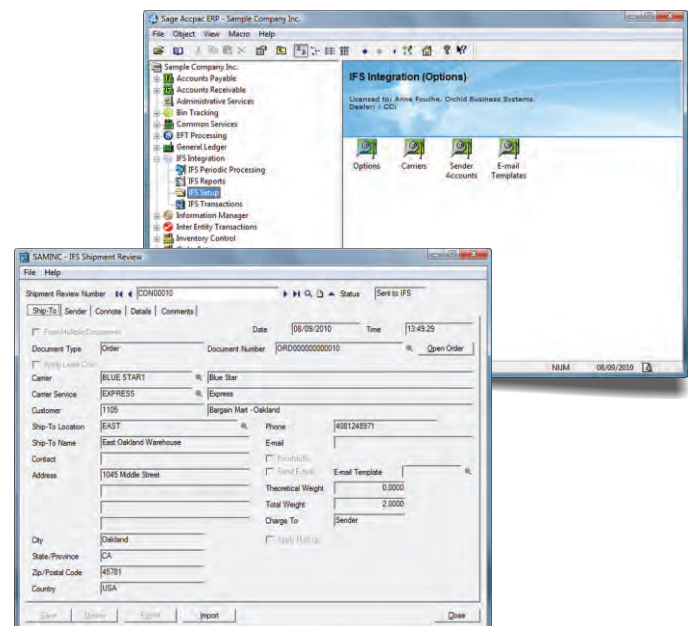
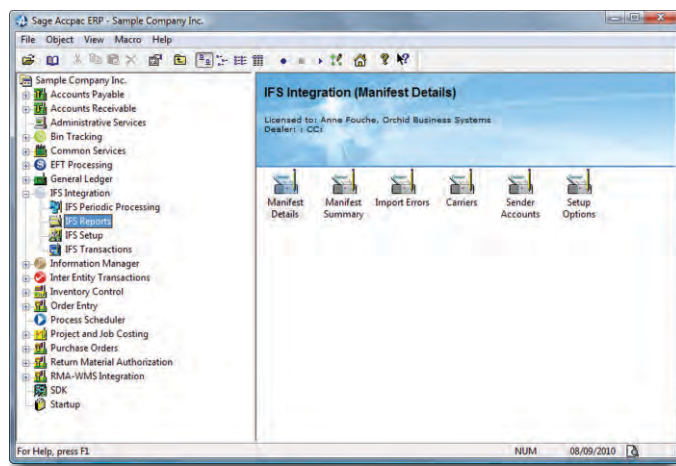
Developed by Orchid Systems, IFS SmartFreight Link for Sage 300 ERP (Accpac) streamlines Sage 300 ERP integration with IFS SmartFreight – a true multi-carrier freight management system. Through the seamless integration with SmartFreight - the bi-directional transfer of data between Sage 300 ERP's Order Entry module and IFS SmartFreight, processing costs can be reduced, data accuracy increased and analysis of actual freight costs facilitated.

IFS SmartFreight is a market leading freight despatch system in Australasia, 100% compliant with all Australian & New Zealand freight carriers.

- Maintain your independence by installing SmartFreight & allow yourself the choice of which freight companies you wish to use to suit your needs.
- System belongs to you, not a transport company & ensures continuity of systems & processes regardless of how often you change transport companies.
- Use accepted generic stationery & Internet connectivity to provide accurate documentation & electronic data required by all freight carriers.
- No duplicated data entry, saving time & eliminating errors.
- Accurate recording of aual freight costs charged by carriers in Sage 300 ERP.

## Key Features

- Seamless integration with SmartFreight - no duplicate entry of data.
- Allows consignments to be created from a single document (order, shipment or invoice) or from multiple documents (orders, shipments or invoices).
- Uploads consignment note number and actual freight charge from SmartFreight either on creation of the consignment in SmartFreight or on production of the manifest from SmartFreight.
- Can use SmartFreight's Least Cost features.
- Default dimensions per pack size per carrier can be stored to facilitate rapid and accurate data entry.
- Analysis report of freight costs per carrier.
- Actual freight costs now available in Sage 300 ERP for comparison against freight charged on to customers.
- Uploads new carriers, services and package descriptions from SmartFreight to keep data current.
- Developed in the Sage 300 ERP SDK, providing its look & feel and seamless integration with Sage 300 ERP's OE and AR modules.
- Standard Sage 300 ERP security, customization capabilities.
- Reports can be customized through Crystal Reports<sup>®</sup>.
- Can be deployed in Client Server and Web Browser modes.
- Compatible with Sage 300 ERP 2012, all editions.
- Runs on all databases supported by Sage 300 ERP.



## Minimum Requirements

IFS Smart Freight Link requires Sage 300 ERP 2012 System Manager, Order Entry.

Further details from your Sage Software Solution Provider.

Copyright © 2012 Orchid Systems. All rights reserved.  
All trademarks are registered trademarks or trademarks of their respective companies.



Suite 2 / 273 Alfred Street, North Sydney, NSW, Australia, 2060  
+61-2-9925-0383 / Fx +61-2-9955-3926 / info@orchidsystems.biz

