

# Bin Tracking

For Sage 300 ERP (Accpac)



Updated for v2014

Keep track of inventory items in multiple bins  
Pinpoint exactly where your inventory is at any point in time  
Reduced picking and put away errors – save time & money  
Smart economical solution that people ask for

## What is Bin Tracking?

Bin Tracking, developed by Orchid Systems, allows Sage 300 ERP users to track inventory items stored in multiple bins within a warehouse or Sage 300 ERP Inventory Control location. Bins can include shelves, slots, containers, barrels, pallets or drawers.

Your picking and putting away are streamlined. Users know where to store and to find any inventory item without wasting time, hunting or checking personal location lists, when Receiving and for the Sales process. Used with hand held data devices, your efficiency is increased even further. Bin Tracking integrates with ACCU-DART barcode scanning systems. All bin information is held within your Sage 300 ERP database – with no need to purchase a separate inventory system for this – and learn, refer to or reconcile to a separate system.

With clear bin locations, Inventory records will be more accurate, harder for items to be lost or misplaced. Customer service benefits from this - both from accurate records, e.g. knowing there are 6 more left, and efficient picking at the time of sale.

With the efficiency gains from the simple good idea of bin tracking, your warehouse can enjoy faster turnaround time, more speedy despatch. You win on both productivity and customer service.

## Features

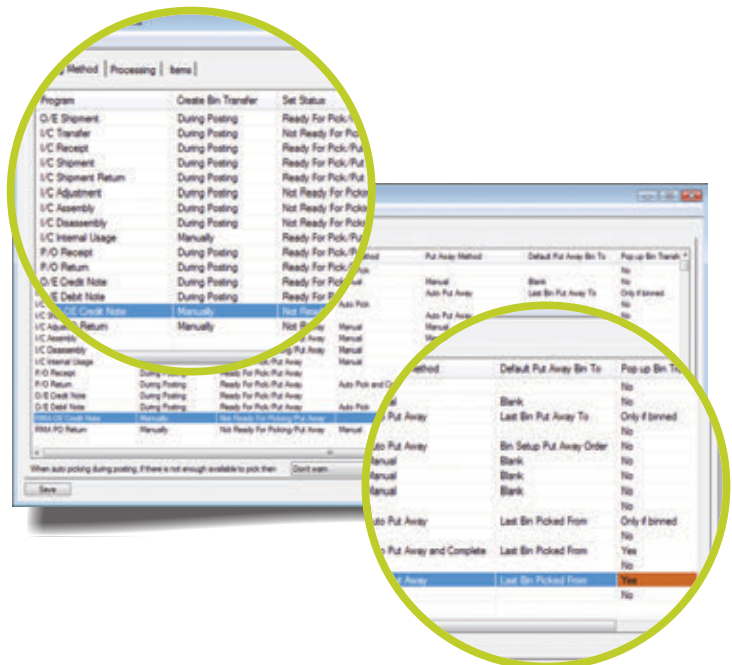
- At the Bin level, define:
  - Individual items (or all) to be kept in the bin
  - Pick order
  - Put-away order
  - Whether or not to allow receipts
  - An optional "quick entry" shortcut key to save typing long bin location codes
- Per item in a bin, configure:
  - Allowed in this bin
  - Picking sequence
  - Unit of measure
  - Re-order quantity
  - Re-order level
- Integrates with Sage 300 ERP IC Serialized Inventory and Lot Tracking.
- Inquiries on bin quantities per item & location.
- Report on bins to be re-stocked.
- All warehouse movements tracked by bin transfer document.
- Per enabled Sage 300 ERP Transaction, configure the system to create the Bin Transfer Document:
  - Manually
  - Automatically - During Posting
- Developed in the Sage 300 ERP SDK, providing its look and feel and seamless integration with Sage 300 ERP's IC, OE and PO modules.

- Ability to define Optional Fields on
  - Bin records
  - Bin Transfer header records
  - Bin Transfer detail records

If the same optional field is defined on the Source transaction (e.g. OE Shipment, PO Receipt, IC Assembly, IC Adjustment) and the Bin Transfer, then the optional field value will be set on the Bin Transfer accordingly.

## The Benefits

- Improved management of your warehouse without more work and complexity.
- Pinpoint exactly where your inventory is at any point in time.
- Warehouse tracking within Sage 300 ERP so there is no need to learn how to use new software.
- Process warehouse activity more efficiently, resulting in faster turnaround times, improved customer satisfaction, lower Inventory write-offs and lower costs.
- All information is contained within your Sage 300 ERP database so there is no need to maintain and reconcile multiple applications and databases.



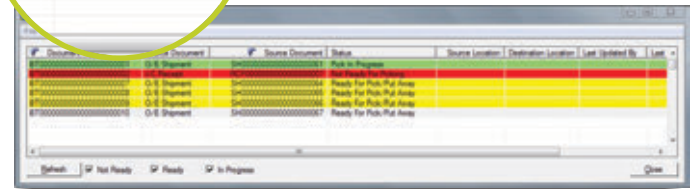
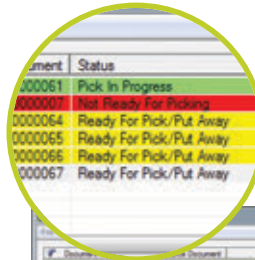


## Warehouse tracking within your Sage 300 ERP database No headaches integrating with and reconciling to third party warehouse management systems with parallel databases!

### More Features

Sage 300 ERP Transactions enabled for Bin Tracking:

- O/E Shipment
- O/E Credit Note
- O/E Debit Note
- I/C Receipt
- I/C Shipment
- I/C Shipment Return
- I/C Transfer
- I/C Adjustment
- IC Stocktake
- I/C Assembly
- I/C Disassembly
- I/C Internal Usage
- P/O Receipt
- P/O Return
- I/C Internal Usage
- RMA O/E Credit Note
- RMA P/O Return
- Supports I/C Serialized Inventory and Lot Tracking
- Supports AutoSimply MO Issuances
- Supports AutoSimply MO Receipts



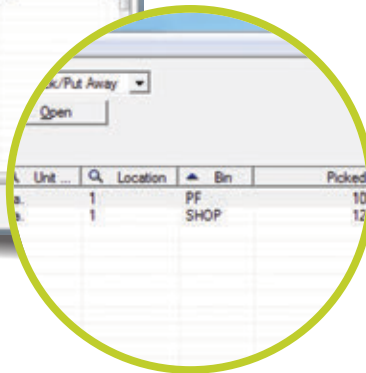
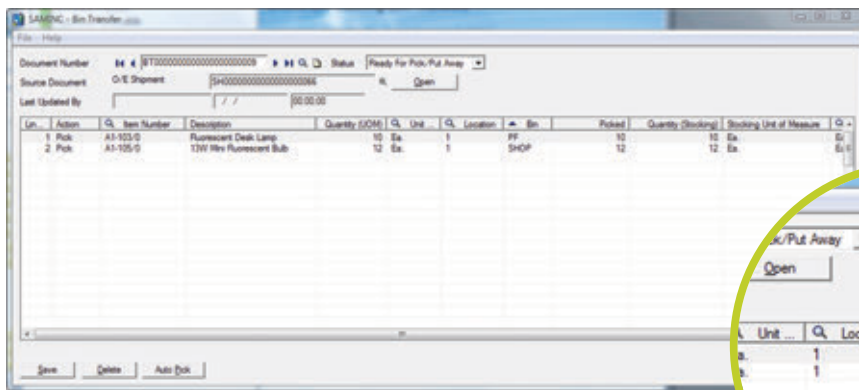
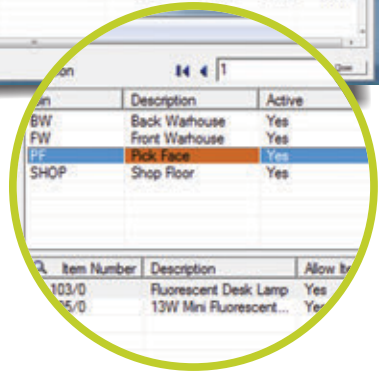
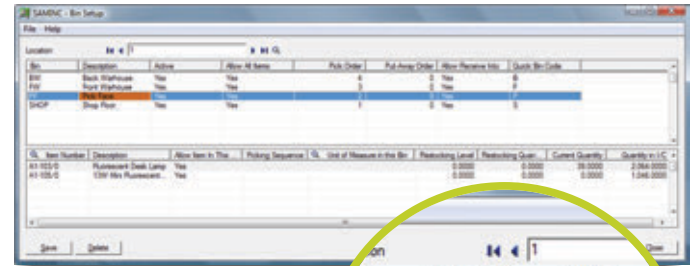
Per Sage 300 ERP Transaction, configure the Bin Transfer document to:

- Automatically pop up for completion with the Sage 300 ERP Transaction
- Be created for subsequent data entry

Configurable status for creation of bin transfer documents.

Per enabled Sage 300 ERP Shipment, set the picking method (choice of pick location) to:

- Auto Pick and Post
- Auto Pick
- Manual



### Minimum Requirements

Bin Tracking 2014 requires Sage 300 ERP 2014 Inventory Control. Compatible with Sage 300 ERP 2014 Order Entry, Purchase Orders and Return Material Authorizations (RMA) and Auto Simply Manufacturing Order. Pop up option only works in client/server mode, not web mode.

Further details from your Sage Software Solution Provider.

Copyright © 2014 Orchid Systems. All rights reserved. All trademarks are registered trademarks or trademarks of their respective companies.



Suite 2 / 273 Alfred Street, North Sydney, NSW, Australia, 2060  
+61-2-9925-0383 / Fx +61-2-9955-3926 / info@orchidsystems.biz

